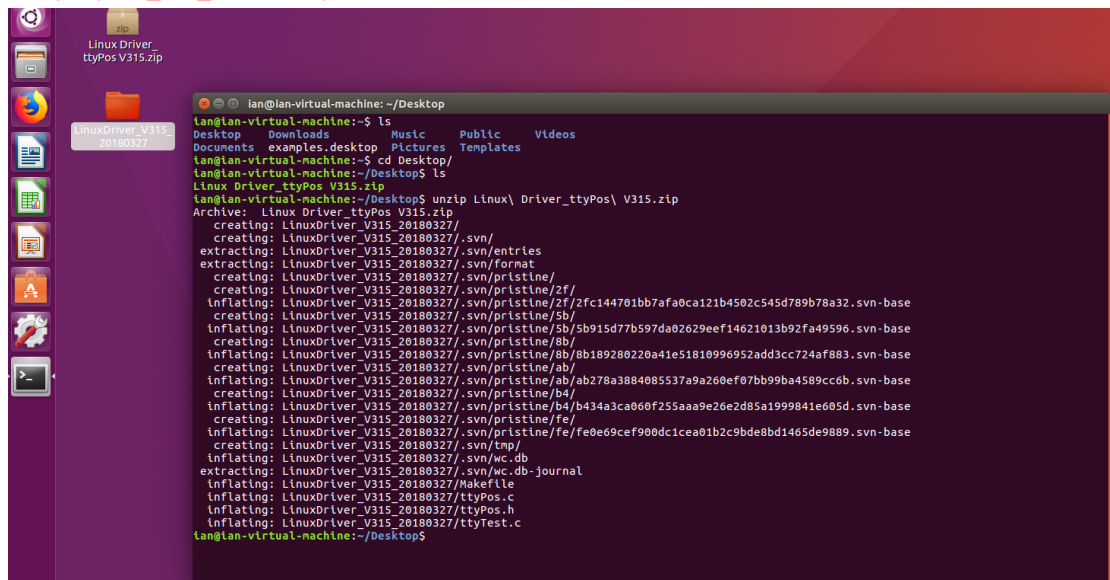


Pax Pos connect Linux guide

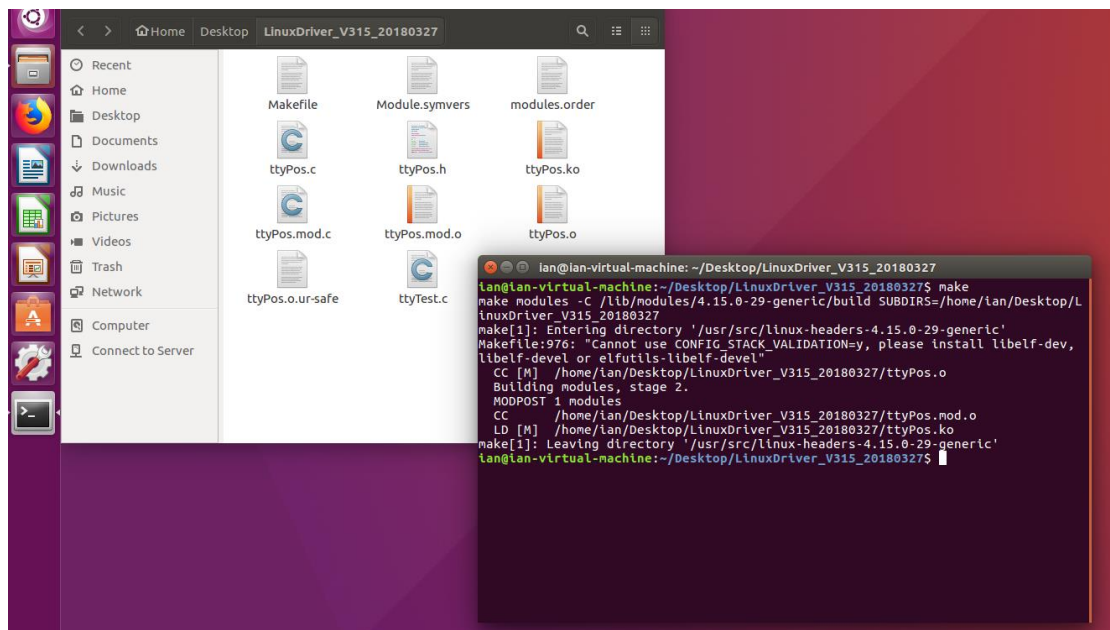
1. Unzip driver package

unzip ttyPos_xxx_xxxxxx.zip



2. Enter the driver directory to build driver

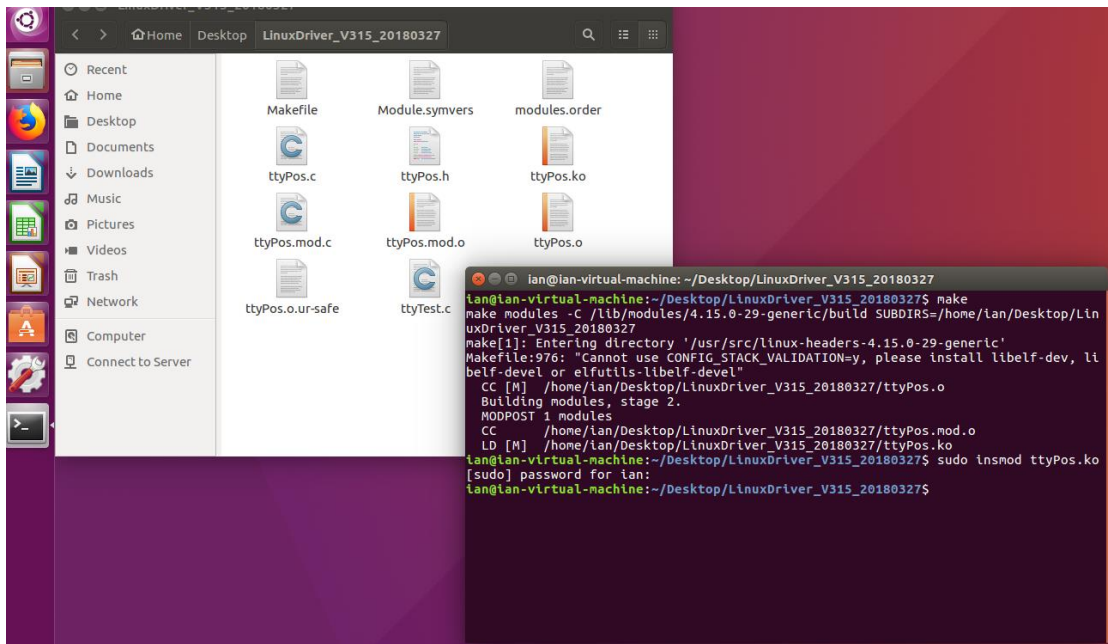
make



3. Check if the ttyPos.ko generate

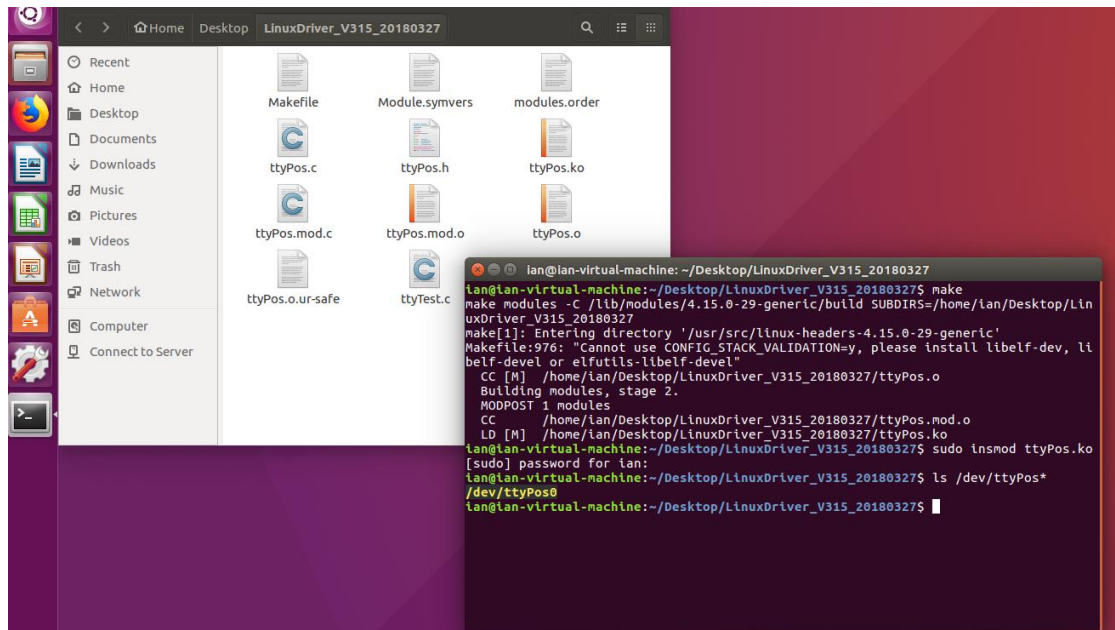
4. Load driver module

`sudo insmod ttyPos.ko`



5. Check the terminal port (The PC needs to connect POS at first)

- a) For Prolin/Monitor platform, use the ttyPos0: `ls /dev/ttyPos*`



- b) For PayDroid platform, use the ttyACM0: `ls /dev/ttyACM*`

```

lan@lan-virtual-machine:~/Desktop/LinuxDriver_V315_20180327$ make
make modules C /lib/modules/4.15.0-29-generic/build SUBDIRS=/home/lan/Desktop/LinuxDriver_V315_20180327
make[1]: Entering directory /usr/src/linux-headers-4.15.0-29-generic
Makefile:976: Cannot use CONFIG_STACK_VALIDATION=y, please install libelf-dev, libelf-devel or elfutils-libelf-devel
CC [M] /home/lan/Desktop/LinuxDriver_V315_20180327/tytPos.o
Building modules, stage 2.
MODPOST 1 modules
CC [M] /home/lan/Desktop/LinuxDriver_V315_20180327/tytPos.mod.o
LD [M] /home/lan/Desktop/LinuxDriver_V315_20180327/tytPos.ko
lan@lan-virtual-machine:~/Desktop/LinuxDriver_V315_20180327$ sudo insmod tytPos.ko[sudo] password for lan:
lan@lan-virtual-machine:~/Desktop/LinuxDriver_V315_20180327$ ls /dev/ttyPos*
/dev/ttyPos0

lan@lan-virtual-machine:~/Desktop/LinuxDriver_V315_20180327$ ls /dev
agpgart  loop3      sr0        tty35      tty9
autofs   loop4      stderr     tty36      ttyPos0a  uhid
block    loop5      stdin     tty37      ttyprntk  ulpout
bsg      loop6      stdout     tty38      tty50     urandom
btrfs-control  loop-control  tty       tty39      tty51     userio
bus      loop-control  tty0      tty40      tty510    vcs
cdrom    mknapper    tty1      tty41      tty511    vcs1
cdw      mcelog      tty10     tty42      tty512    vcs2
char     men         tty11     tty43      tty513    vcs3
console  memory_bandwidth  tty12     tty44      tty514    vcs4
core     mfi         tty13     tty45      tty515    vcs5
cpu_dma_latency  net         tty14     tty46      tty516    vcs6
disk     network_latency  tty15     tty47      tty517    vcs7
dmide    network_throughput  tty16     tty48      tty518    vcs8
dri      null        tty17     tty49      tty519    vcsa1
dvd      port        tty18     tty50      tty520    vcsa2
ecryptfs  ppt         tty19     tty51      tty521    vcsa3
fb       psaux       tty20     tty52      tty522    vcsa4
fd       pts         tty21     tty53      tty523    vcsa5
full     random      tty22     tty54      tty524    vcsa6
fuse     rtc         tty23     tty55      tty525    vcsa7
hidraw0  rtc0        tty24     tty56      tty526    vga_arbiter
hwng     rng         tty25     tty57      tty527    vhost-net
hwrng    rngcore    tty26     tty58      tty528    vhost-vsock
initctl  sda1        tty27     tty59      tty529    vnc1
input    sda2        tty28     tty60      tty530    vsock
kmsg     sda5        tty29     tty61      tty531    zero
lightnvm sg0         tty30     tty62      tty532    zero
log      sg1         tty31     tty63      tty533    zero
loop0    snapshot    tty32     tty64      tty534    zero
loop1    snd         tty33     tty65      tty535    zero
loop2    snd         tty34     tty66      tty536    zero

lan@lan-virtual-machine:~/Desktop/LinuxDriver_V315_20180327$ ls /dev
agpgart  loop3      sr0        tty35      tty9
autofs   loop4      stderr     tty36      ttyPos0a  uhid
block    loop5      stdin     tty37      ttyprntk  ulpout
bsg      loop6      stdout     tty38      tty50     urandom
btrfs-control  loop-control  tty       tty39      tty51     userio
bus      loop-control  tty0      tty40      tty510    vcs
cdrom    mknapper    tty1      tty41      tty511    vcs1
cdw      mcelog      tty10     tty42      tty512    vcs2
char     men         tty11     tty43      tty513    vcs3
console  memory_bandwidth  tty12     tty44      tty514    vcs4
core     mfi         tty13     tty45      tty515    vcs5
cpu_dma_latency  net         tty14     tty46      tty516    vcs6
disk     network_latency  tty15     tty47      tty517    vcs7
dmide    network_throughput  tty16     tty48      tty518    vcs8
dri      null        tty17     tty49      tty519    vcsa1
dvd      port        tty18     tty50      tty520    vcsa2
ecryptfs  ppt         tty19     tty51      tty521    vcsa3
fb       psaux       tty20     tty52      tty522    vcsa4
fd       pts         tty21     tty53      tty523    vcsa5
full     random      tty22     tty54      tty524    vcsa6
fuse     rtc         tty23     tty55      tty525    vcsa7
hidraw0  rtc0        tty24     tty56      tty526    vga_arbiter
hwng     rng         tty25     tty57      tty527    vhost-net
hwrng    rngcore    tty26     tty58      tty528    vhost-vsock
initctl  sda1        tty27     tty59      tty529    vnc1
input    sda2        tty28     tty60      tty530    vsock
kmsg     sda5        tty29     tty61      tty531    zero
lightnvm sg0         tty30     tty62      tty532    zero
log      sg1         tty31     tty63      tty533    zero
loop0    snapshot    tty32     tty64      tty534    zero
loop1    snd         tty33     tty65      tty535    zero
loop2    snd         tty34     tty66      tty536    zero

lan@lan-virtual-machine:~/Desktop/LinuxDriver_V315_20180327$

```

6. Grant permission for port

sudo chmod 666 /dev/ttyPos*

or

sudo chmod 666 /dev/ttyACM*

```

lan@lan-virtual-machine:~/Desktop/LinuxDriver_V315_20180327$ ls /dev
agpgart  loop3      sr0        tty35      tty9
autofs   loop4      stderr     tty36      ttyPos0a  uhid
block    loop5      stdin     tty37      ttyprntk  ulpout
bsg      loop6      stdout     tty38      tty50     urandom
btrfs-control  loop-control  tty       tty39      tty51     userio
bus      loop-control  tty0      tty40      tty510    vcs
cdrom    mknapper    tty1      tty41      tty511    vcs1
cdw      mcelog      tty10     tty42      tty512    vcs2
char     men         tty11     tty43      tty513    vcs3
console  memory_bandwidth  tty12     tty44      tty514    vcs4
core     mfi         tty13     tty45      tty515    vcs5
cpu_dma_latency  net         tty14     tty46      tty516    vcs6
disk     network_latency  tty15     tty47      tty517    vcs7
dmide    network_throughput  tty16     tty48      tty518    vcs8
dri      null        tty17     tty49      tty519    vcsa1
dvd      port        tty18     tty50      tty520    vcsa2
ecryptfs  ppt         tty19     tty51      tty521    vcsa3
fb       psaux       tty20     tty52      tty522    vcsa4
fd       pts         tty21     tty53      tty523    vcsa5
full     random      tty22     tty54      tty524    vcsa6
fuse     rtc         tty23     tty55      tty525    vcsa7
hidraw0  rtc0        tty24     tty56      tty526    vga_arbiter
hwng     rng         tty25     tty57      tty527    vhost-net
hwrng    rngcore    tty26     tty58      tty528    vhost-vsock
initctl  sda1        tty27     tty59      tty529    vnc1
input    sda2        tty28     tty60      tty530    vsock
kmsg     sda5        tty29     tty61      tty531    zero
lightnvm sg0         tty30     tty62      tty532    zero
log      sg1         tty31     tty63      tty533    zero
loop0    snapshot    tty32     tty64      tty534    zero
loop1    snd         tty33     tty65      tty535    zero
loop2    snd         tty34     tty66      tty536    zero

lan@lan-virtual-machine:~/Desktop/LinuxDriver_V315_20180327$ ls /dev/ttyPos*
/dev/ttyPos0

lan@lan-virtual-machine:~/Desktop/LinuxDriver_V315_20180327$ sudo chmod 666 /dev/ttyPos*
lan@lan-virtual-machine:~/Desktop/LinuxDriver_V315_20180327$

```